

# MiVoice MX-ONE Service Node Manager

Makes administration of the MiVoice MX-ONE simple, easy and manageable

## Key Features

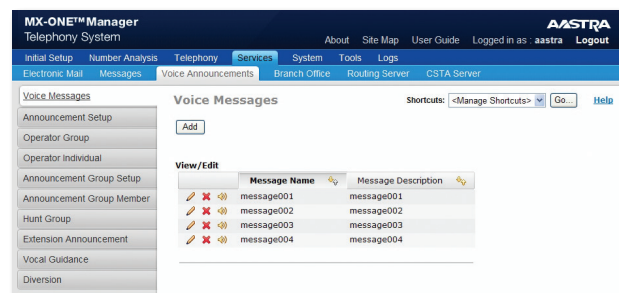
- No software installation required. Set up done via a web-based graphical configuration tool
- Automatically installed on the first MiVoice MX-ONE Service Node in each system
- Provides view, add, remove, change, print and compare tools for most configuration commands
- Contains walkthroughs for guided set up, and templates for faster configuration
- Supports HTTPS for secure configuration

With task-oriented features for fast configuration, MX-ONE Service Node Manager administrators can set up and manage most of the system settings within a single website.

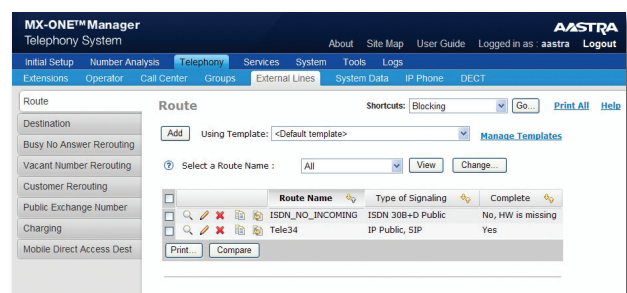
Tight integration with MiVoice MX-ONE means a consistent look and feel as administrators navigate through the setup tasks efficiently. Configuration difficulties are minimized, with guided set up walkthroughs, templates for faster configuration and accessible online user guides. Furthermore, administration is not limited to a single instance, with the ability to jump between multiple instances and tasks at any time, without losing valuable data.

## Main Features

- Graphical web-based configuration tool for MiVoice MX-ONE (doesn't require additional software installation)
- Automatically installed on the first MiVoice MX-ONE Service Node in each system
- Provides view, add, remove, change, print and compare tools for most of the configuration commands in the MiVoice MX-ONE
- Contains walkthroughs for guided set up of new sites or complex configurations
- Uses templates for faster configuration. Templates can be downloaded and uploaded to other MX-ONE Service Node Managers
- Complete configuration independent of the order in which the data is entered
- Supports HTTPS for secure configuration
- Connects to multiple IP phone software servers for remote management of IP phone configuration files



Voice Messages



Route Interface

## User Advantages

- A site map gives direct visibility and access into all tasks
- All settings associated with tasks can be viewed on a single page
- Administrate one or multiple instances at the same time
- Print out configurations for one or multiple instances of each task
- View details of multiple instances on the same page for a thorough overview of current set up
- Jump to a related task while another task is underway without losing any entered data, using the patent-pending Multistep feature
- All fields have descriptive names, and options are in plain text
- Online help with user guide, task help and individual field help

## General Features

- Configurable shortcuts for direct access to other tasks
- Registering and storing of log-in attempts (security log), user activities (audit trail log) and internal information (event log). Different levels of internal registering can be set
- MX-ONE Provisioning Manager or a local Linux account can be used for authenticating login attempts and to configure administrator accounts
- Login lock after three unsuccessful login attempts. Unlock can be done from Provisioning Manager, if set up as an authentication server
- A batch tool enables recording of operations for accessing in another Service Node Manager at a later time
- Local backup and restore of the Service Node Manager and the Service Node
- Revision overview of Service Node Manager, Service Nodes and Media Gateways
- Pre-configured SIP trunks to simplify configuration for different providers. Ability to upload SIP trunk setting data via a configuration file
- AD authentication

## PROVISIONING OF IP/SIP TERMINALS

MiVoice MX-ONE Service Node Manager includes the initiation and system configuration for IP/SIP terminals. Through the Service Node Manager, the system administrator can easily create or edit existing configuration files, and enable the terminals to be connected to the LAN. Once connected, relevant configuration files and software will be automatically downloaded to the phones. User and extension related settings are configured via MX-ONE Provisioning Manager.

## INTERFACES

- HTTP and secure HTTP (HTTPS) protocols
- Command line interface for executing Unix-style commands

## SERVER REQUIREMENTS

- SUSE Linux Enterprise Server 11

## CLIENT REQUIREMENTS

- Microsoft Internet Explorer 8.0 or later
- Mozilla Firefox 3.0 or later