

# MiVoice MX-ONE Traffic Manager

Simplified measurement and analysis of performance data from MiVoice MX-ONE

Gives administrators real-time insight into the performance of trunks, routes, operators, individual extensions, and more

## Key Features

- Graphical interface for managing MX-ONE performance
- Traffic analysis tools of major components, including radio base stations and IP extensions
- Configurable and easy-to-read performance traffic reports
- Multiple MX-ONE Service Nodes can be managed from a single performance manager application

With MX-ONE Traffic Manager, performance data is available at your fingertips, giving administrators the business intelligence needed to ensure system resources are finely tuned to avoid system bottlenecks and ensure maximum availability. Traffic Manager supports the extended reporting of radio base station performance statistics, automatically retrieved from the MX-ONE system and stored in the Traffic Manager server. This data can be easily viewed, modified and presented in customizable and exportable graphic reports.

## Main Features

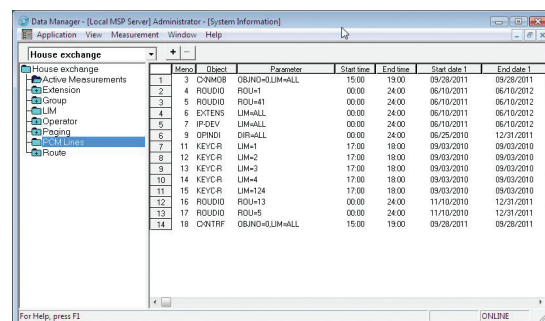
Having accurate, real-time statistics on the traffic flows in the communication system can prevent bottlenecks and help you optimise performance in high traffic situations.

- *Optimized trunk routes or leased lines means optimized service provider expenses for your organization*
- *Correct number of tie-lines (internal trunks) means more calls stay on the corporate network for increased capacity, faster access and reduced toll charges*
- *Sufficient incoming trunks during peak traffic hours will avoid lost calls and improve customer service*
- *Optimized radio planning to avoid missed/dropped calls in dense in-building cordless environments*

## Data Manager

- *Full Microsoft Windows graphical user interface with common SPM look-and-feel*
- *Up to 250 traffic measurements from the MX-ONE*
- *Manage up to 250 traffic measurements in total for trunks, extensions, operators, PCM lines, and common system resources*

- *Multi-user environment for local and remote connections*
- *Automatic or manual traffic data extraction from MX-ONE*
- *Back-up and restore of historical traffic measurement data for presentation access*
  - *Up to six months for primary database*
  - *Up to one year for auxiliary database*
- *Online display of the MiVoice MX-ONE feedback*
- *Drag-and-drop support for data manipulation*
- *Multiple MiVoice MX-ONE configurations*
- *Daily system log files*



The screenshot shows the 'Data Manager' application window. The title bar reads 'Data Manager - [Local MSP Server] Administrator - [System Information]'. The interface includes a menu bar (Application, View, Measurement, Window, Help) and a tree view on the left with categories like 'House exchange', 'Active Measurements', 'Extension', 'Group', 'LIM', 'Operator', 'Planning', and 'Route'. The main area displays a table with columns: Memo, Object, Parameter, Start time, End time, Start date 1, and End date 1. The table contains 18 rows of data.

Memo	Object	Parameter	Start time	End time	Start date 1	End date 1	
1	CONN08	OBIND=0LIM=ALL	15:00	19:00	09/28/2011	09/28/2011	
2	ROLD00	ROU=1	00:00	24:00	06/10/2011	06/10/2012	
3	ROLD00	ROU=41	00:00	24:00	06/10/2011	06/10/2012	
4	EXTENS	LIM=ALL	00:00	24:00	06/10/2011	06/10/2012	
5	IPDEV	LIM=ALL	00:00	24:00	06/10/2011	06/10/2012	
6	OPNDI	DIR=ALL	00:00	24:00	06/25/2010	12/31/2011	
7	KEYCR	LIM=1	17:00	18:00	09/03/2010	09/03/2010	
8	12	KEYCR	LIM=2	17:00	18:00	09/03/2010	09/03/2010
9	13	KEYCR	LIM=3	17:00	18:00	09/03/2010	09/03/2010
10	14	KEYCR	LIM=4	17:00	18:00	09/03/2010	09/03/2010
11	15	KEYCR	LIM=124	17:00	18:00	09/03/2010	09/03/2010
12	16	ROLD00	ROU=13	00:00	24:00	11/10/2010	12/31/2011
13	17	ROLD00	ROU=5	00:00	24:00	11/10/2010	12/31/2011
14	CONTRF	OBIND=0LIM=ALL	15:00	19:00	09/28/2011	09/28/2011	

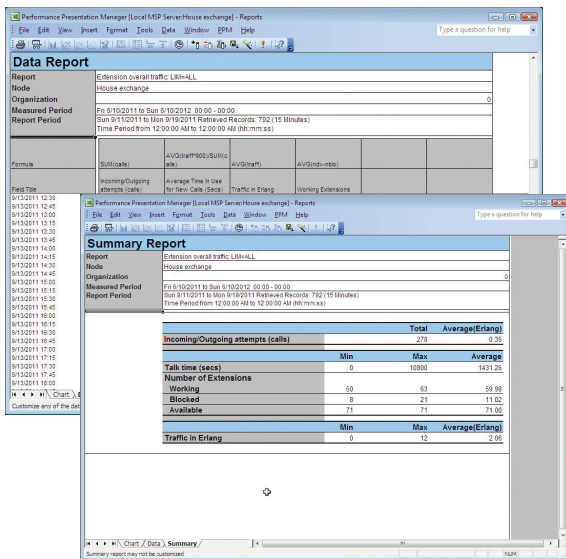
Local Traffic Manager Server Administrator

## Presentation Manager

- Wizard for easy-to-design reports
- Simplified graphical user interface, using Microsoft Excel
- Fully customizable report layouts
- Predefined reports for:
  - Operators
  - Trunk routes
  - Extensions
  - Hunt groups
  - Cordless extensions
  - IP network interface
- View reports in graphic, tabular or summary formats
- Manipulate chart data by editing existing data fields to create new reports
- All database fields available for customizable reports

## TASK SCHEDULER

- Automatic printing and distribution of reports
- Ability to switch between accessing primary or auxiliary databases



Traffic Presentation Manager

## Technical Information

### HARDWARE/SOFTWARE

Since each Traffic Manager configuration has different storage and processing requirements, the following is a general guideline for a small Traffic Manager installation:

- Pentium 2.4 GHz or better for the Traffic Manager server
- Pentium 1.3 GHz or better for client applications
- Minimum 1 GB RAM
- Minimum 1024x768 SVGA monitor
- Connection to the IP network (LAN)
- Traffic Manager Server: Microsoft Windows 2003 (32 bit), Windows 2008 (32 & 64 bit) and Windows 2012 (64 bit)
- Traffic Manager Client: Microsoft Windows XP (32 bit), Windows Vista (32 bit), Windows 7 (32 & 64 bit), Windows 8 (64 bit)
- Microsoft SQL Server 2005 (32 bit), SQL Server 2005 Express (32 bit), SQL Server 2008 (32 & 64 bit), SQL Server 2008 Express (32 & 64 bit), SQL Server 2012 (64 bit) and SQL Server 2012 Express (64 bit)
- Traffic Presentation Manager requires Excel 2003 (32 bit), 2007 (32 bit), 2010 (32 and 64 bit) to view reports

- Traffic Manager can be installed in a VMware environment

### COMMUNICATION

- Connection to the MX-ONE is achieved via IP network, using SSH
- Traffic Manager clients can connect to the server via the corporate IP network (LAN) or even remotely via VPN connection

### COMPATIBILITY

- Traffic Manager is compatible with MX-ONE Version 4.1 and later